



5 Cramond Court, Gateshead, NE9 6JY

£235,000

Nestled in the highly sought-after Cramond Court, this charming semi-detached bungalow is a true gem. With its immaculate presentation and thoughtful design, this property is perfect for those seeking a comfortable and stylish home. Upon entering, you are greeted by a welcoming hallway that leads to a spacious lounge and dining room. This inviting space features a delightful fireplace with a living flame effect fire, creating a warm atmosphere, while a large window offers a picturesque view of the beautifully stocked front garden. The kitchen is a culinary delight, equipped with an integrated oven, an eye-level combination microwave, a fridge, and a dishwasher. A window in the kitchen provides lovely views, making meal preparation a pleasure. This bungalow boasts two well-proportioned bedrooms.

The main bedroom is fitted with wardrobes and tasteful furniture, ensuring ample storage and comfort. The second double bedroom also features fitted units, providing additional space for your belongings. The shower room is designed with safety in mind, featuring anti-slip flooring for peace of mind. The gardens surrounding the property are exceptionally well-maintained, bursting with vibrant colours that enhance the overall appeal of the home. A driveway and a garage offers convenient off-street parking while the rear garden, facing west, is perfect for enjoying the afternoon sun. The garage also has a useful utility space with appliances which are to remain at the property. This delightful bungalow is ideally located close to local amenities and transport links, making it a perfect choice for those looking for convenience and comfort. Viewing is essential to fully appreciate the charm and quality of this lovely home.

ENTRANCE HALLWAY



BEDROOM TWO

10'11" x 8'5" (3.35m x 2.58m)



SHOWER ROOM

6'4" x 5'8" (1.94m x 1.74m)



LOUNGE/DINING ROOM

17'1" x 11'1" (5.22m x 3.40m)



KITCHEN

9'11" x 8'4" (3.03m x 2.55m)

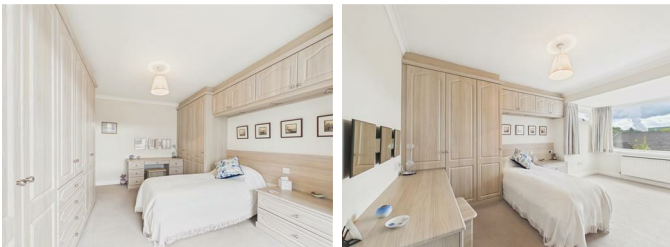


EXTERNAL



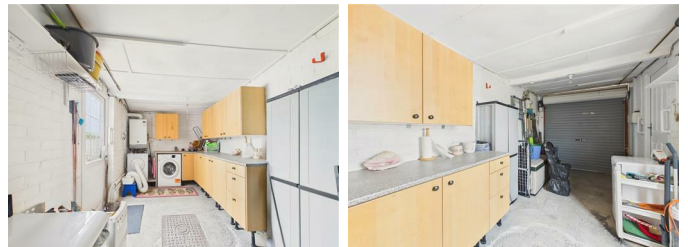
BEDROOM ONE

17'2" x 9'2" (5.25m x 2.80m)



GARAGE

18'9" x 7'8" (5.74m x 2.36m)



DRIVEWAY



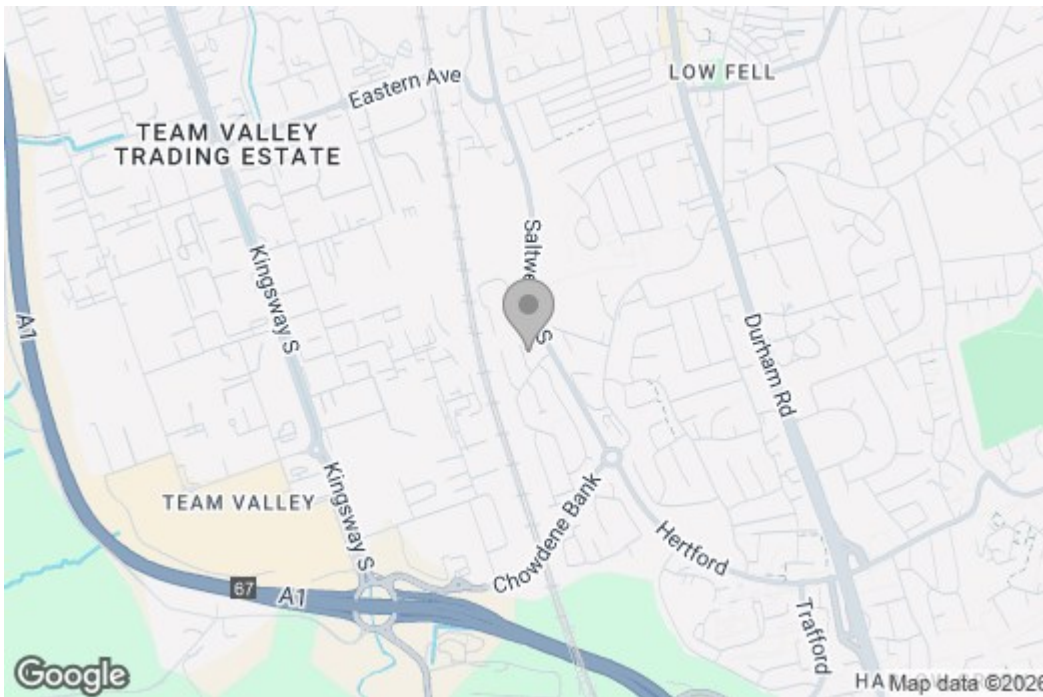
Property disclaimer

IMPORTANT NOTE TO PURCHASERS: We endeavour to make our sales particulars accurate and reliable, however, they do not constitute or form part of an offer or any contract and none is to be relied upon as statements of representation or fact. The services, systems and appliances listed in this specification have not been tested by us and no guarantee as to their operating ability or efficiency is given. All measurements have been taken as a guide to prospective buyers only, and are not precise. Floor plans where included are not to scale and accuracy is not guaranteed. If you require clarification or further information on any points, please contact us, especially if you are travelling some distance to view. Fixtures and fittings other than those mentioned are to be agreed with the seller. We cannot also confirm at this stage of marketing the tenure of this house.

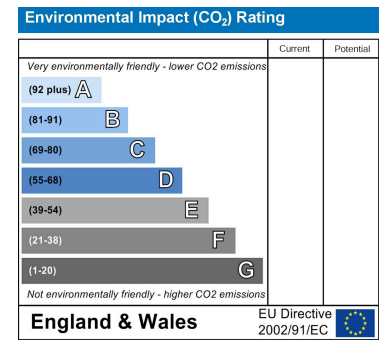
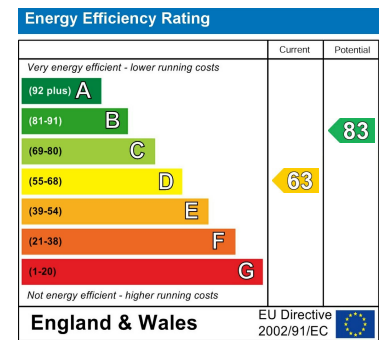
Floor Plan



Area Map



Energy Efficiency Graph



These particulars, whilst believed to be accurate are set out as a general outline only for guidance and do not constitute any part of an offer or contract, purchaser should not rely on them as statements of representation of fact, but must satisfy themselves by inspection or otherwise as to their accuracy. No person in this firm's employment has the authority to make or give an representation or warranty in respect of the property.